



Datchworth Turn, Leverstock Green, HP2 4PB

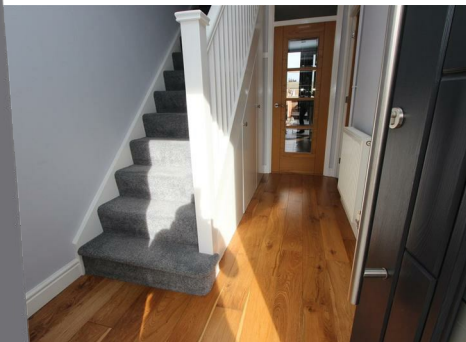
Per month £1,950 Per month

A SUPERBLY PRESENTED and well proportioned family home situated in this ideal position on Datchworth Turn in Leverstock Green. Accommodation includes an entrance hallway, downstairs w/c, REFITTED kitchen, separate utility room, SPACIOUS living/dining room, three well proportioned DOUBLE bedrooms and a family bathroom with separate shower. Externally the property further boasts front & rear gardens and a GARAGE. Available mid January 2026. Unfurnished. Council tax band C.



Sears & Co

www.searsandco.co.uk call: 01442 254 100

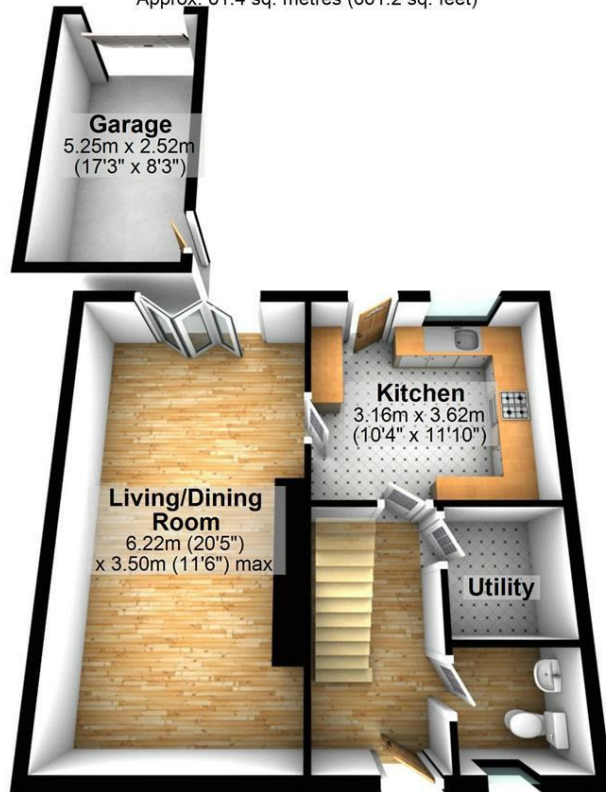


Sears & Co

www.searsandco.co.uk call: 01442 254 100

Ground Floor

Approx. 61.4 sq. metres (661.2 sq. feet)



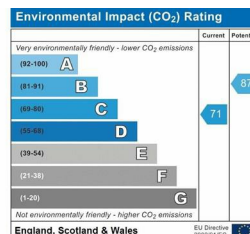
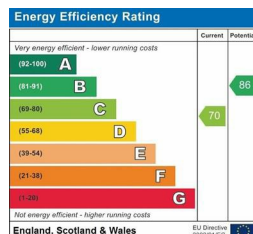
First Floor

Approx. 48.1 sq. metres (518.2 sq. feet)



Total area: approx. 109.6 sq. metres (1179.4 sq. feet)

All measurements and information on this plan are approximate and the plan itself is provided for illustrative purposes only.
Plan produced using PlanUp.



The Agent has not tested any apparatus, equipment, fixtures and fittings or services and so cannot verify that they are in working order or fit for the purpose. A Buyer is advised to obtain verification from their Solicitor or Surveyor. References to the Tenure of a Property are based on information supplied by the Seller. The Agent has not had sight of the title documents. A Buyer is advised to obtain verification from their Solicitor.

Items shown in photographs are NOT included unless specifically mentioned within the sales particulars. They may however be available by separate negotiation.

Buyers must check the availability of any property and make an appointment to view before embarking on any journey to see a property.

For further information see the Property Misdescriptions Act.

www.searsandco.co.uk

Sears & Co

Hemel Hempstead Office: 67 High Street, Old Town, Hemel Hempstead, Hertfordshire, HP1 3AF

call: 01442 254 100